

# Bughouse Chess

**Tandem-Chess / Team-Chess / Siamese-Chess / Hungarian-Chess**



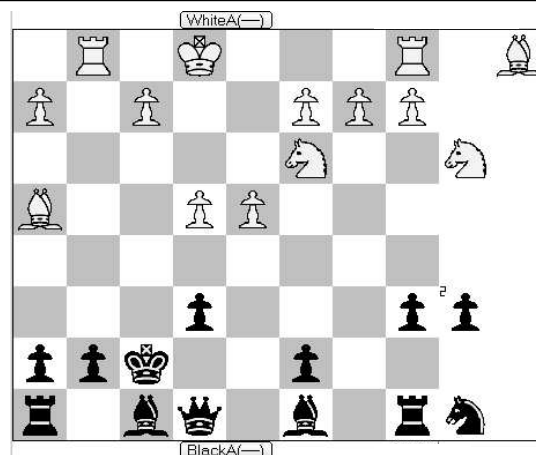
**Coming  
Spring / Summer 2005**

**A comprehensive coverage of the exciting chess variant, including articles on:**

- ♦ beginner to expert game strategy
- ♦ opening analysis
- ♦ puzzles
- ♦ game reviews
- ♦ tournament reports
- ♦ and more !

**With contributions by the world's best bughouse players.**

**Visit our webpage at [www.bughouse-book.com](http://www.bughouse-book.com) for more details, an extract, and ordering information.**



White to move mates, with a knight and bishop to place.

[www.bughouse-book.com](http://www.bughouse-book.com)